

PUBLIC HEALTH ENGLAND - Cancer profiles- Fingertips user guide

Fingertips replaces the NCIN (National Cancer Intelligence Network) general practice profiles. General Practice Profiles for cancer provide comparative information for benchmarking and reviewing variations at a General Practice level. They are intended to help primary care think about clinical practice and service delivery in cancer and early detection and diagnosis.

The website is interactive and can be used in many ways.

The best way to use the site and find out about the data is to spend time exploring it. However, if you would like further advice and support on understanding and using your practice data please contact the [CRUK facilitators](#) (hyperlink to contact details) or [CRUK strategic GPs](#) (hyperlink to contact details) who can GPs and practices with this.

Getting started.

Website <http://fingertips.phe.org.uk/>

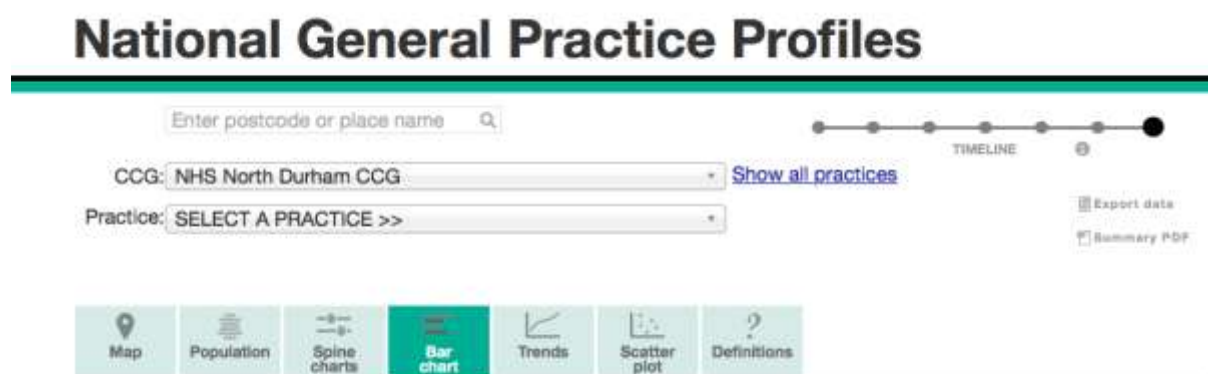
There is a generic YouTube user guide for all the profiles.

For Cancer data, you will need to select either

- *National General Practice Profiles* – to review practice data
- *Cancer Services* – to review CCG data

National General Practice Profiles

First select “National General Practice Profiles”. Then select “Start; Go to the data”



The screenshot shows the 'National General Practice Profiles' website interface. At the top, there is a search bar labeled 'Enter postcode or place name' with a magnifying glass icon. Below the search bar is a 'TIMELINE' indicator with a series of dots and a play button icon. The main content area features two dropdown menus: 'CCG: NHS North Durham CCG' and 'Practice: SELECT A PRACTICE >>'. To the right of these menus is a 'Show all practices' link. Below the dropdowns are two buttons: 'Export data' and 'Summary PDF'. At the bottom of the interface is a navigation bar with seven tabs: 'Map', 'Population', 'Spine charts', 'Bar chart' (which is highlighted in green), 'Trends', 'Scatter plot', and 'Definitions'.

To select a GP practice you can either select a CCG or enter a post code. Then select the GP practice.

Data can be reviewed by fields including Map, Population, Spine Charts, Bar Charts, Trends or Scatter plot. There is also a tab to explain where and when the data is collected.

Map; This a map with location of all the CCG practices.

Population; This gives an age and gender profile of the practice. There is also a comparison to CCG and England averages. And latest deprivation status, ethnicity and life expectancy are also included.

Spine charts; This gives a choice of indicators, the two that are helpful regarding cancer are, Cancer and Cancer TWW referrals. Then choose a comparator which will be either CCG practices or Deprivation decile which is practices with a similar deprivation score.

The cancer indicator includes Cancer prevalence, New cancer incidence, Screening up take, use of none radiology diagnostics (endoscopy colonoscopy etc.), Emergency and Other cancer presentations.

The Cancer TWW referral indicator has data on the number of referrals, conversion rates, detection rates, five-year conversion rate and detection rates. It also has the rates of TWW referral for suspected breast, lower GI, lung and skin cancer.

The comparator helps you compare the practice to either of practices in the CCG or similarly deprived practices, this can be helpful in helping understanding the data.

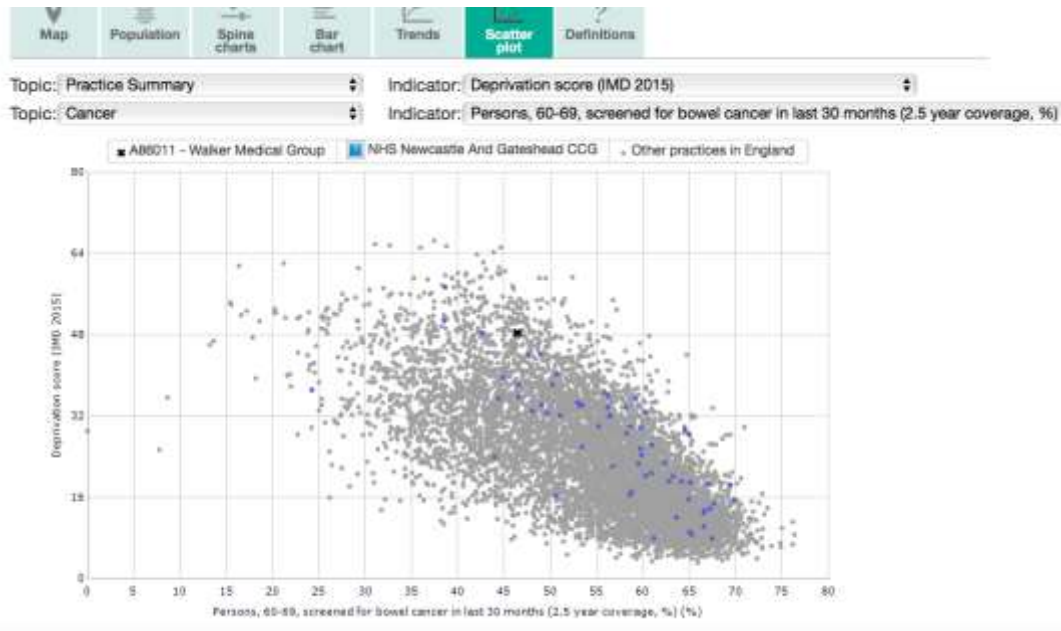


Bar Chart; This is the same data as the spine charts but in bar chart format. This benchmarks the practice to all practices in the CCG.

Trends; This gives the trends for each indicator for the selected practice over the (up to) last 7 years.

Scatter plot; This is a very useful way of comparing data. With this data view you choose two indicators. It may be helpful for one indicator to be from the practice summary such as aged over 65 or deprivation index and the second indicator to be a cancer indicator.

The output shows the practice as a black cross, CCG practices as blue dots and all other England practices as Grey dots.



Cancer Services

First select “Cancer Services”. Then select “Start; Go to the data”

There are a lot of choices how to compare this data. It is probable easier to use either GP or CCG.

Next decide if you want to review either; Demographics, Screening and Diagnostics or Two - week wait referrals. These are selected by the tabs immediately below Cancer Service page title.

Once you done this you will have 5 more choices on the next row of tabs; Overview, Compare indicators, Map, Trends, Compare Areas, and Area Profiles. The remaining two tabs are for Definitions to help understand the data and then lastly Downloads, which allows you to down load data.

When reviewing GP practice data

Overview; This shows all practices in the CCG and all cancer indicators. The data can be benchmarked with either CCG or England. The display can be values, or trends or values and trends. The data is colour coded to Lower Similar and Higher values.

Compare Indicator; This is the same as a scatter plot in the National General Practice Profiles (see above)

Map; does not work for GP practice data!

Trends; For each indicator shows the trend over the (up to) last 7 years

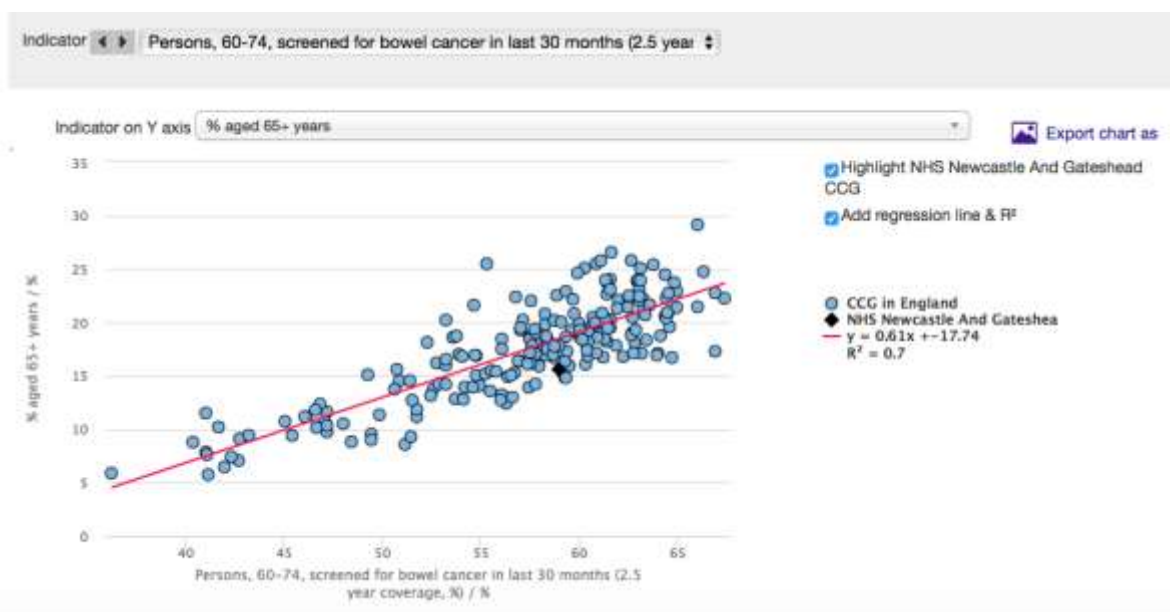
Compare Areas; This puts all CCG practices in a funnel diagram showing practices who are outliers. This is also a helpful way of reviewing data.

Area Profiles; This is a similar view to the spine charts in National General Practice Profiles (see above) but only shows GP data.

When reviewing CCG data

Overview; This shows for all CCGs for all cancer indicators. The data is benchmarked with England average. The display can be values, or trends or values and trends. The data is colour coded to Lower Similar and Higher values.

Compare Indicator; This is the same as a scatter plot in the National General Practice Profiles (see above) but shows data for CCGs.



Map; This shows cancer indicator by CCG. The CCG's are colour coded by lower, similar or higher than average

Trends; For each indicator shows the trend over the (up to) last 7 years

Compare Areas; This puts all CCGs in a funnel diagram showing CCGs who are outliers. This is also a helpful way of reviewing data.

Area Profiles; This is a similar view to the spine charts in National General Practice Profiles (see above) but only shows CCG data.

Understanding data is very important. A practice of mainly students will have less patients aged over 65 and hence will have a lower cancer prevalence. Conversely if a practice has a lot of patients aged over 65 they should have a higher cancer prevalence. If not ask why not. Sometimes this is a coding issue rather than anything else.

When comparing indicators such as screening, practices should compare themselves against similarly deprived practices as this is a major factor in screening rates. A practice with 82% cervical screening rate may compare badly against similar practices who achieve an 85% rate.

The best way to find out what data is available is to spend some looking at the data on the website. If you need advice, please contact the Northern Cancer Alliance and one of the CRUK GPs or primary care facilitator may be able to help.

Chris Tasker
CRUK Strategic GP
Northern Cancer Alliance
February 2017